



# WROCLAW UNIVERSITY OF ENVIRONMENTAL AND LIFE SCIENCES





WROCLAW UNIVERSITY  
OF ENVIRONMENTAL  
AND LIFE SCIENCES



# WROCLAW

## - THE MEETING PLACE



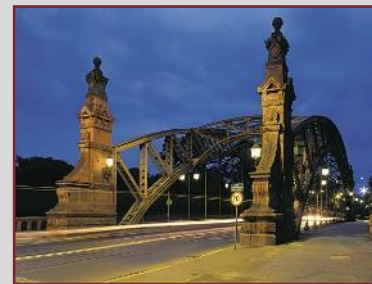
elaba.pl



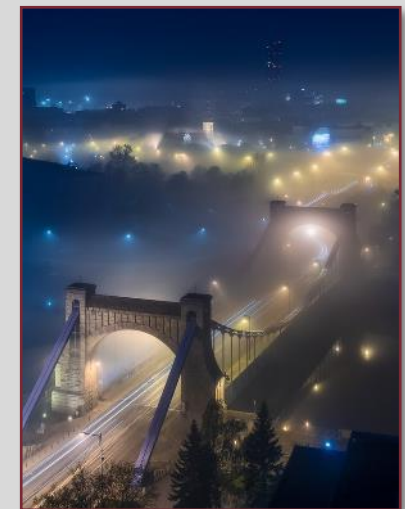
wikipedia.org



essli2012.pl



sokol.net.pl



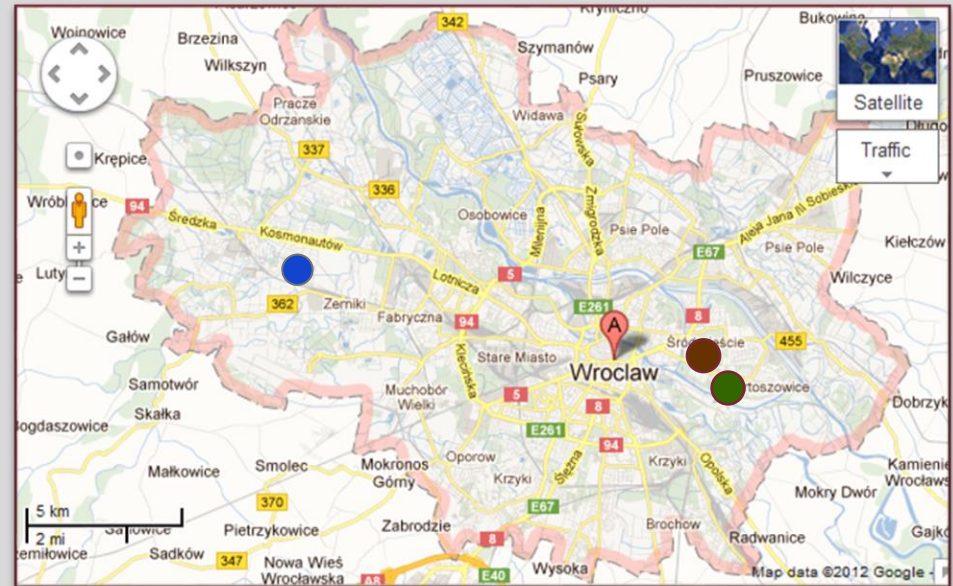
Jarek Ciurus Fotografia

## POLAND



- interesting cities
- Warsaw and other capital cities

## WROCLAW



- University – campus „Plac Grunwaldzki”
- Campus „Biskupin” and dormitories
- Airport



# WROCLAW UNIVERSITY OF ENVIRONMENTAL AND LIFE SCIENCES



**Wrocław University  
of Environmental and Life Sciences**  
Norwida St. 25, 50-375 Wrocław, Poland  
[www.upwr.edu.pl](http://www.upwr.edu.pl)



WROCLAW UNIVERSITY  
OF ENVIRONMENTAL  
AND LIFE SCIENCES

## UNIVERSITY AUTHORITIES 2020-2024 TERM



**RECTOR**

**prof. dr hab. inż. Jarosław Bosy**



**Prof. dr hab. inż.  
Aneta Wojdyło  
Vice-Rector  
for Science**



**Prof. dr hab. inż.  
Damian Knecht  
Vice-Rector  
for Student Affairs  
and Education**



**Prof. dr hab. inż.  
Anna Chelmońska-Soyta  
Vice-Rector  
for Internationalization**



**Prof. dr hab. inż.  
Adam Szewczuk  
Vice-Rector  
for University Organisation  
and Development**



## A BIT OF HISTORY

- **1945** – the decree of the State National Council which created the University and Polytechnic with the Faculty of Veterinary Medicine and the Faculty of Agriculture
- **1951** – these two faculties were incorporated in the newly opened Higher School of Agriculture
- **1972** – Higher School of Agriculture was renamed as the Agricultural University of Wroclaw
- **2006** – renamed as

WROCLAW UNIVERSITY  
OF ENVIRONMENTAL AND LIFE  
SCIENCES





**At the beginning of its activity the University employed only 36 scientific and 159 administrative staff members.**

## TODAY

Wroclaw University of Environmental and Life Sciences employs close to 1660 people including:

270 professors

470 other academic teachers

Faculties:

Biology and Animal Science

Biotechnology and Food Science

**Environmental Engineering and Geodesy**

Life Sciences and Technology

Veterinary Medicine

The number of students - close to 7000





# THE FACULTY OF ENVIRONMENTAL ENGINEERING AND GEODESY



**Grunwaldzka str. 55, 50- 357 Wrocław, Poland**  
**phone +48 71 320 15 58, fax +48 71 320 15 57**  
**[www.aqua.up.wroc.pl](http://www.aqua.up.wroc.pl)**



## FACULTY AUTHORITIES (20020-2024)

DEAN

prof. dr hab. inż. Bernard Kontny



dr hab. inż. arch.  
Renata Gubańska,  
Vice-Dean for:  
Landscape Architecture



dr hab. inż.  
Piotr Gołuch,  
Vice-Dean for:  
Civil Engineering,  
Geodesy and Cartography



prof. dr hab. inż.  
Beata Raszka,  
Vice-Dean for:  
Spatial Management,  
Safety Engineering



dr hab. inż.  
Robert Gołuch  
Vice-Dean for: Bioeconomy,  
Environmental Engineering,  
Water Engineering and  
Management



## FACULTY STAFF





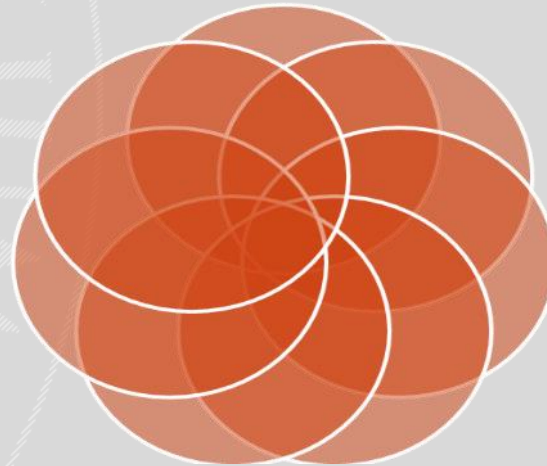
## FACULTY STRUCTURE

**Institute  
of Spatial Management**

**Department  
of Civil Engineering**

**Institute  
of Environmental  
Engineering**

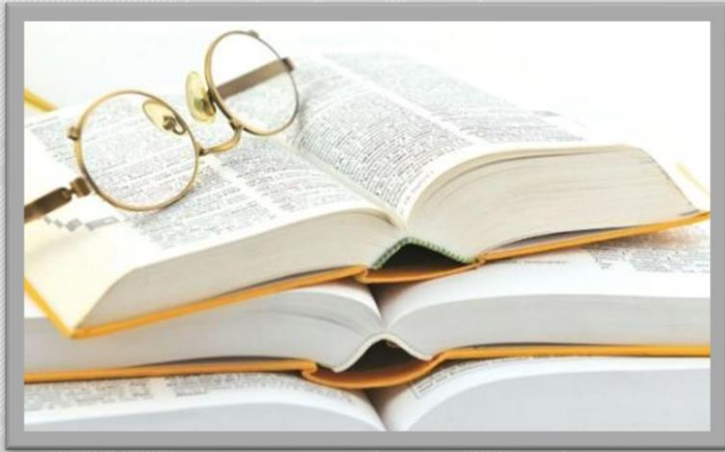
**Department  
of Applied Mathematics**



**Department  
of Landscape  
Architecture**

**Department  
of Environmental Protection  
and Development**

**Institute  
of Geodesy and Geoinformatics**



# STRATEGIC RESEARCH DIRECTIONS



## INSTITUTE OF ENVIRONMENTAL ENGINEERING

- modeling of hydrological and hydraulic processes (water flow in watercourses, sediment transport and hydrodynamic impact of vegetation, groundwater and pollution flow, hydrological cycle processes)
- restoration of rivers and pro-ecological river engineering
- water circulation processes in the soil-plant-atmosphere system and shaping the quality of the environment
- shaping the quantity and quality of water resources and their optimal use, water quality in retention reservoirs
- wastewater treatment in conventional and semi-natural systems, the use of biopreparations, assessment of the suitability of wastewater for reuse
- electrochemical detection of pollutants, purification of industrial wastewater from heavy metals by sorption, use of natural materials for sorption of metals from wastewater
- environmental pollution with micro- and nanoplastics





## INSTITUTE OF GEODESY AND GEOINFORMATICS

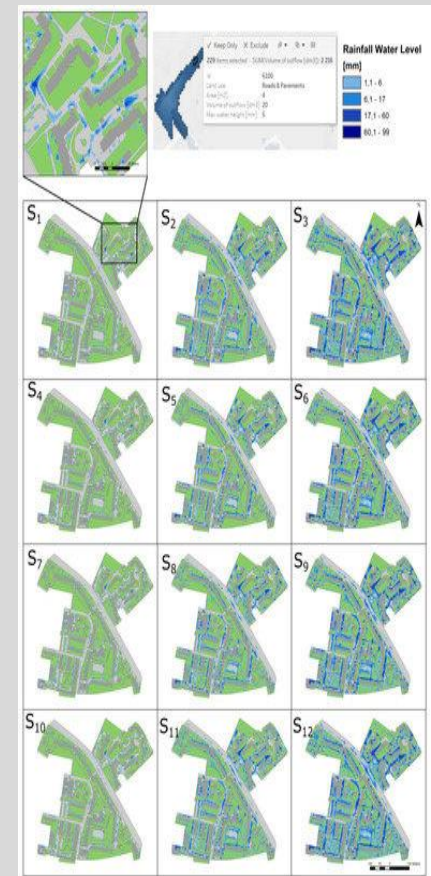
- development of new processing methodologies for GNSS troposphere observations (ground-based, space-based and reflected)
- finding innovative applications for GNSS observations in atmosphere studies
- developing new processing strategies for satellite radar data processing in anthropogenic deformation zones
- development of new methods to integrate geodetic observations: ground-based and space-based; microwave, laser, radar and gravimetric, point- and area- based, episodic and continuous
- advancing of satellite laser ranging processing within the International Laser Ranging Service
- advancing of GNSS data processing within E-GVAP initiative
- application of geodetic technique to analyze the frost heave soils
- development of Machine Learning methods for remote sensing and satellite geodesy and their application





## INSTITUTE OF SPATIAL MANAGEMENT

- rational spatial management, monitoring and forecasting socio-economic phenomena and programming sustainable development
- management of natural and landscape resources.
- adaptation to climate change
- housing economy, changes and needs of the real estate market
- local government management; territorial social systems.
- ecosystem services, environmental value and ecological losses
- demographic changes and problems of an aging society;
- perception of space and environment
- audiosphere of cities and the sonic environment of environmentally valuable areas

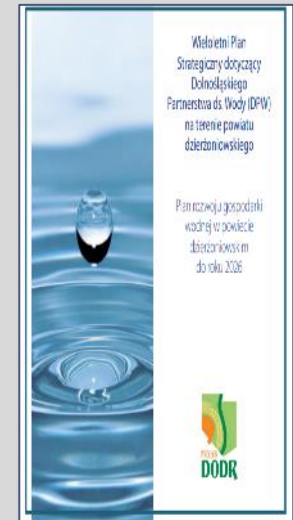
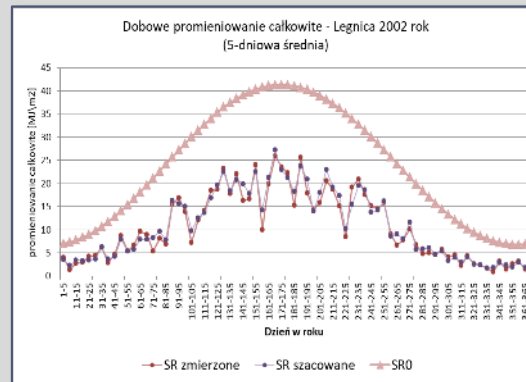
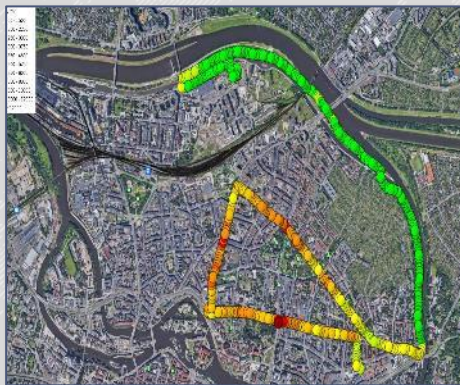






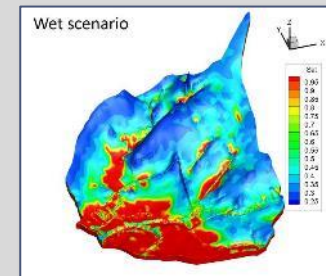
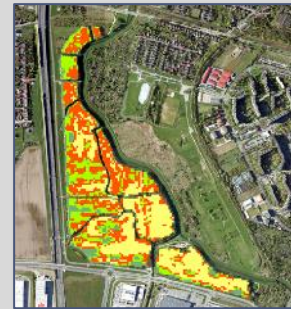
DEPARTMENT OF APPLIED MATHEMATICS

- research and modeling of air quality in urban agglomerations
- Riemann spaces satisfying Einstein-type curvature conditions
- estimation of daily total radiation
- cooperation within the Lower Silesian Water Partnership
- cooperation in the field of statistical analysis of various data





- planning and management of blue-green infrastructure in adapting urban areas to climate change
- evaluation and analysis of the acoustic climate
- measurements and quantitative and qualitative assessment of surface waters
- monitoring and analysis of environmental water resources
- resource assessment and landscape retention planning
- evaluation of work safety in the area of environmental infrastructure
- work ergonomics in industry
- occupational risk assessment for services removing the effects of fires in illegal waste storage sites
- climate and bioclimate analysis using linear and non-linear statistical methods
- numerical modeling of the flow of surface and ground waters, taking into account pollutants of agricultural origin
- research on leachate treatment from municipal waste landfills
- analyzes of physicochemical properties and toxicity of landfill leachate
- research on the bioaccumulation and translocation of selected pollutants from leachates and on various types of fillings
- remote sensing of the environment in terms of the effects of climate change
- remote sensing and photogrammetry in the aspect of rainwater management and urban greenery





## DEPARTMENT OF LANDSCAPE ARCHITECTURE

- assessment of the impact on the environment and landscape of rock mines in the past and in the context of adaptation to climate change
- use of dendrology, dendrochronology and dendrochemistry in risk management in the vicinity of trees and the functioning of vegetation in urban areas, taking into account adaptation to climate change
- research on the perception of green areas based on digital landscape and VR models
- anti-social behavior and their spatial determinants
- impact of space features and their lighting on the users' feelings
- evaluation of the functioning and development of methods in the field of environmental impact assessment
- legal conditions for the functioning of water management, environmental protection and landscape architecture
- assessment of the condition and climatic threats for the needs of agriculture and forestry as well as arranged greenery





## INTERNATIONAL COOPERATION

Latvia University of Agriculture in Jelgava (Latvia),  
Changsha Research Institute of Mining and Metallurgy in Changsha, Hunan (China)  
University of Rostock (Germany),  
Hunan Agricultural University, Hunan Province, Changsha (China),  
Onsekiz Mart University in Kanakkale (Turkey),  
Slovak University of Agriculture in Nitra (Slovakia),  
Brno University of Technology (Czech Republic),  
Minzu University, Beijing (China),  
University of Florida in Gainesville (USA),  
University of Hawaii at Manoa (USA).  
Technical University in Zurich  
Norwegian University of Agriculture in As.  
Kyiv State Civil Engineering and Architecture University (Ukraine)  
Humboldt University in Berlin (Germany),  
Slovak University of Agriculture in Nitra  
Dresden University of Technology (Germany)  
Kanakale Onsekiz Mart University (Turkey).  
University of Camerino (Italy)  
National Seismologic Observatory in Athens (Greece)  
also universities in Rostock, Dresden, Hannover, Köln, Munich, Wageningen,  
Prague, Brno, Nitra, Oslo, Delft



# INTERNATIONAL STUDENTS EXCHANGE



The number of foreign students studying at our faculty is steadily increasing every year from 28 in 2010/11 up to 78 in 2019/20.

We host students within programs: **ERASMUS+**, **CEEPUS**, **TOLPA** and **TERAZ WROCLAW**.



# THE FACULTY OF ENVIRONMENTAL ENGINEERING AND GEODESY



Student exchange under the Erasmus+ program is very popular because our university cooperates with over 100 other universities throughout Europe.

Every year, several students leave our department, most often to: Portugal, the Czech Republic, Spain, the Netherlands, Greece and Italy.

We usually host 20 to 40 Erasmus students from all over Europe, but also from Africa and South America.





# THE ACADEMIC YEAR STARTS







## WE EDUCATE STUDENTS

### at 8 FIELDS OF STUDY:



- Environmental Engineering since 1951
- Geodesy and Cartography since 1962
- Civil Engineering since 1972
- Landscape Architecture since 2000
- Land Management since 2001
- Safety Engineering since 2009
- Water Engineering & Management since 2011
- Bioeconomy since 2022

THE FACULTY OF ENVIRONMENTAL ENGINEERING AND GEODESY



# SCIENTIFIC AND DIDACTIC BASE



## GEO-INFO-HYDRO CENTRE

Project co-financed by  
the European Union





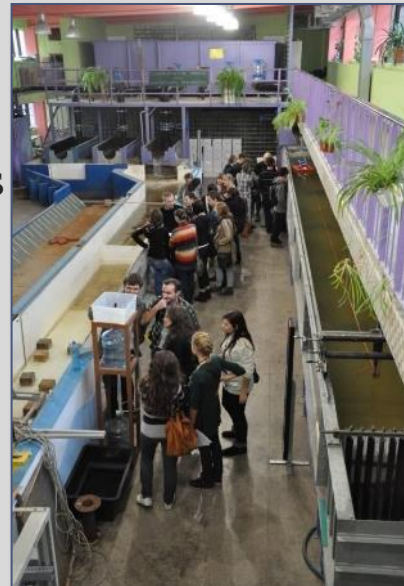
LECTURE HALLS  
COMPUTER ROOMS  
ART STUDIO

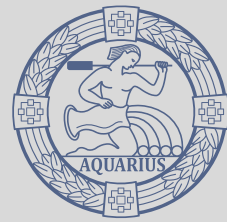




## LABORATORIES:

- Geotechnical
- GIS-Lab
- Multisensory surveying technologies
- Materials technology  
and building structures
- Soil physics  
and modelling environmental processes
- Water and wastewater technology
- Water





## FACULTY LIBRARY

Geo-Info-Hydro Center

ul. Grunwaldzka 55

2nd floor, room 3.07

email: [biblioteka.wksig@upwr.edu.pl](mailto:biblioteka.wksig@upwr.edu.pl)

### The collection

- over 4.5 thousand volumes of books, scripts, corporate literature,
- over 120 journal titles,
- over 300 standards.





WROCLAW UNIVERSITY  
OF ENVIRONMENTAL  
AND LIFE SCIENCES



## MAIN LIBRARY

ul. Norwida 29 (in the courtyard)

[www.bibl.up.wroc.pl](http://www.bibl.up.wroc.pl)

Search and access to paper and electronic collections is possible through the MULTI SEARCH ENGINE. Detailed information you will find in your e-mail university box.





**IV PIĘTRO**

**5.02** Sala indywidualnej pracy studentów

**5.03** Sala indywidualnej pracy studentów ze stanowiskami komputerowymi

**5.04** Pomieszczenie socjalne studentów

# COMPUTER & SOCIAL ROOMS FOR STUDENTS

Geo-Info-Hydro Centre







## EXHIBITIONS & GALLERIES

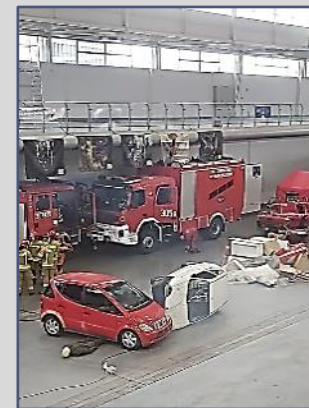




## STUDENT SCIENTIFIC CLUBS



- Landscape Architecture
- Building Engineering
- Geodesy
- Hydrologist and Hydrotechnicians
- Land Management
- Spatial Planning





# STUDENT PROJECTS

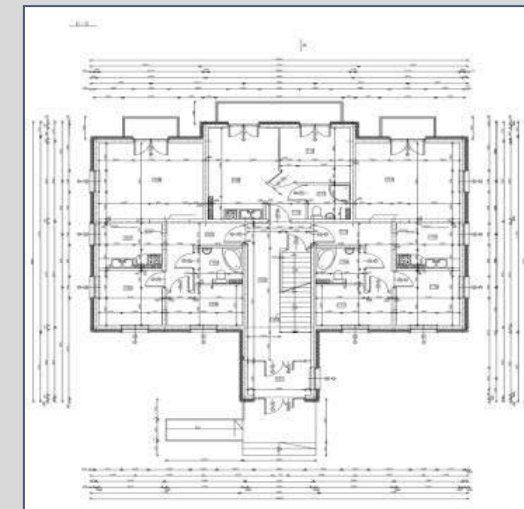
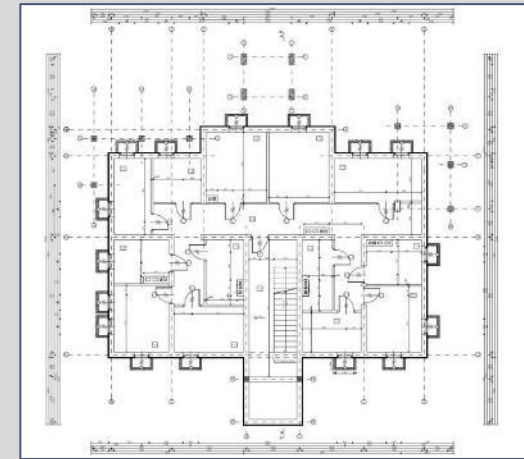
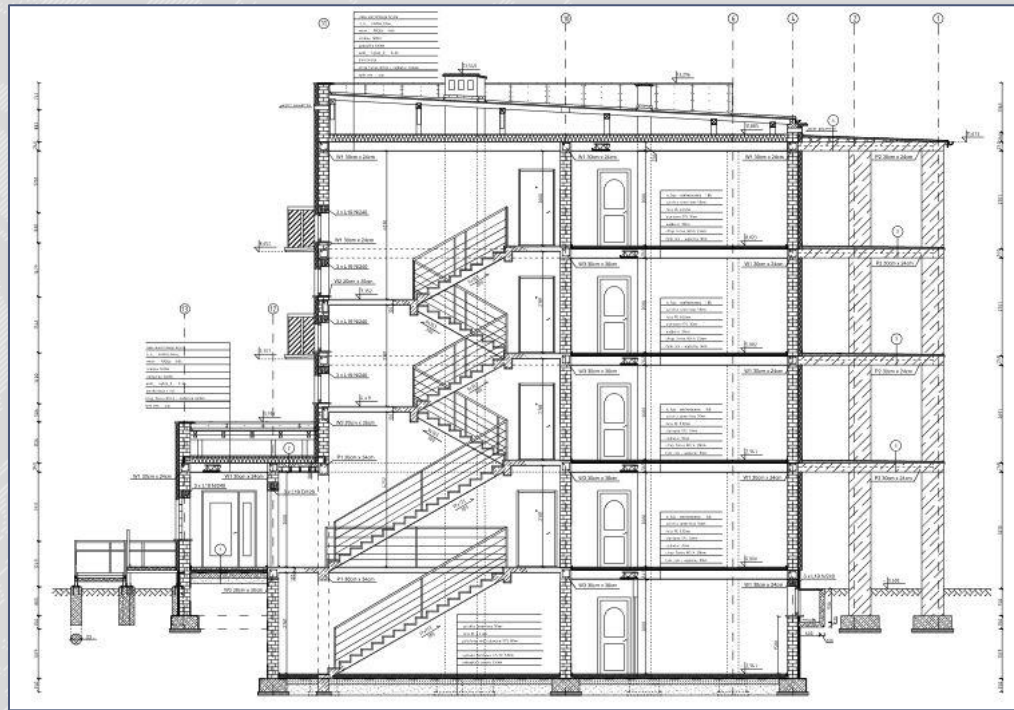


## DRAWING & PAINTING









## PROJECT OF MULTI-FAMILY HOUSE







WROCŁAW UNIVERSITY  
OF ENVIRONMENTAL  
AND LIFE SCIENCES



**UNIVERSITY SOCIAL BASE**



# WROCLAW UNIVERSITY OF ENVIRONMENTAL AND LIFE SCIENCES

## UNIVERSITY CAMPUSES



### LEGEND

- A1- F12 number of building
- A,G,W... letters for classrooms in buildings
- ➔ main entrance
- ☒ restaurant
- 🏪 shops
- 🏧 ATM - bankomat
- 🏥 pharmacy
- 🚊 tram and bus stops
- P parking
- ✉ post office
- 🛏 dormitory

Distance between campuses - 4 km  
(you can take tram, bus or city bike)

# CAMPUS "PLAC GRUNWALDZKI"



WROCLAW UNIVERSITY  
OF ENVIRONMENTAL  
AND LIFE SCIENCES





WROCLAW UNIVERSITY  
OF ENVIRONMENTAL  
AND LIFE SCIENCES

## CAMPUS "BISKUPIN"





## DORMITORIES

Wrocław University of Environmental and Life Sciences has over 1,000 places in five dormitories. Individual dormitories have rooms of various sizes: from triple, double and single rooms to modular rooms with their own bathroom and kitchen. Each of the rooms has access to the Internet and an intercom connecting with the 24-hour reception.





# DORMITORIES

## - rooms and facilities





WROCLAW UNIVERSITY  
OF ENVIRONMENTAL  
AND LIFE SCIENCES



## LEISURE ACTIVITIES





## STUDENT ORGANISATIONS:

- University Sports Association
- Dance Club „Up”
- Folk Dance Group „Jedliniok”
- Student Choir and Orchestra
- University Tourist Club
- STEP UP - Support Team for Exchange Programs





# STEP UP - Support Team for Exchange Programs



WROCLAW UNIVERSITY  
OF ENVIRONMENTAL  
AND LIFE SCIENCES

**Since 2019**

(ealier Erasmus Student Network 2006 -20018)

President: Wiktoria Szewiore

e-mail: [step.upwr@gmail.com](mailto:step.upwr@gmail.com)

<https://www.facebook.com/stepupwr/>

We are a group of enthusiastic people willing to help international students arriving at our university.

We offer:

- Mentor Program
- Orientation Week
- excursions and cultural events
- social activities





WROCLAW UNIVERSITY  
OF ENVIRONMENTAL  
AND LIFE SCIENCES



## STEP UP ACTIVITIES





WROCLAW UNIVERSITY  
OF ENVIRONMENTAL  
AND LIFE SCIENCES



## UNIVERSITY SPORT CENTER





WROCLAW UNIVERSITY  
OF ENVIRONMENTAL  
AND LIFE SCIENCES



## UNIVERSITY SPORT CLUBS



# THE FACULTY OF ENVIRONMENTAL ENGINEERING AND GEODESY



## WELCOME TO OUR FACULTY